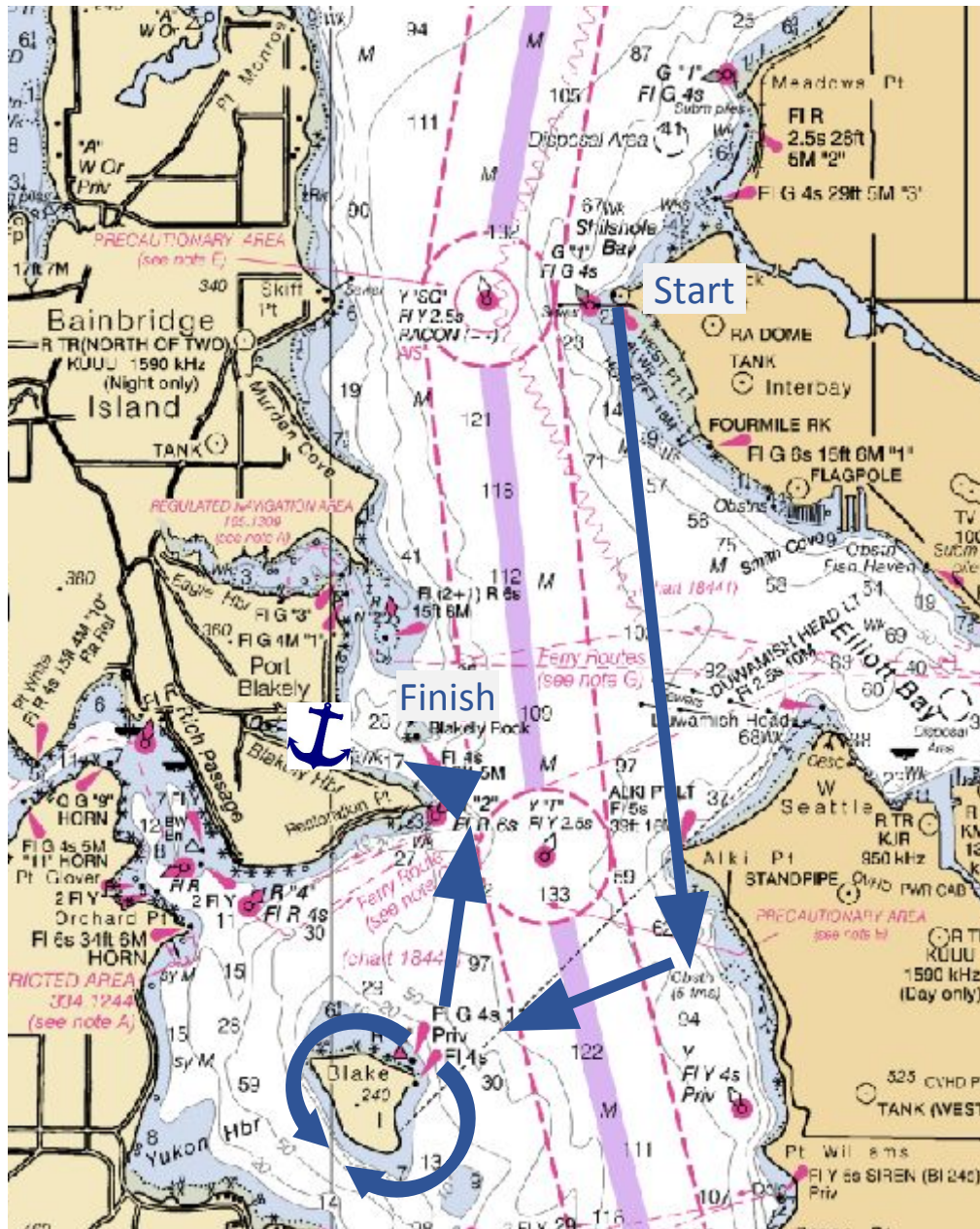


# 2022 PSCC Tequila "Race" Rules

Saturday 9/24/2022



1. The Starting Line is between the West Point Buoy and VTS buoy "SG", and east of the VTS lanes. Starting times will be from 9:00 to 11:30 ish PDT. Each contestant shall record their own starting time.
2. The course goes from the start line to Blake Island which shall be rounded either to port or starboard then back to Blakely Rock at the entrance to Port Blakely.
3. The finish is on a line due south true from the beacon on Blakely Rock. Each contestant shall record their finishing time to the nearest minute. The Race will conclude at 1630. If the Race Committee decides to shorten the course or terminate the race, the announcement will be made on VHF 68.
4. PSCCBS handicap forms with bewildering criteria will be passed out at the raft-up in Port Blakely. They will be subjectively evaluated by the Race Committee on-site and the winner appointed. The winner will receive a bottle of high-grade tequila which they shall pour for the delight of the contestants.
5. U.S Sailing race rules apply unless nobody is watching you. If somebody sees you engage in a race foul, they should load their flare gun and aim for your sails. Or, if you would prefer to save your sails, you may elect to do a 360 turn. Protests which are accompanied by bribes may be taken up by the judges. Stay away from the Orcas as required. Feel free to play chicken with the big ships, ferries, submarines, and navy vessels if you want a one way ticket to Supermax. Sailing is poor there, so follow all applicable laws during the race. Decisions by the race committee may be appealed by filing a complaint with the Seattle City Council at your risk being revoked, eliminated, or ignored. The tequila is not at risk of being revoked or eliminated.